

YIZUMI **H Series** Die Casting Machine



Alshen
2015.02.07



H series cold chamber die casting machine is optimized in performance, **humanization**, **safety, stability** and **efficiency**.

1. HUMANIZATION

10-inch touch screen

Observation and operation are more convenient.

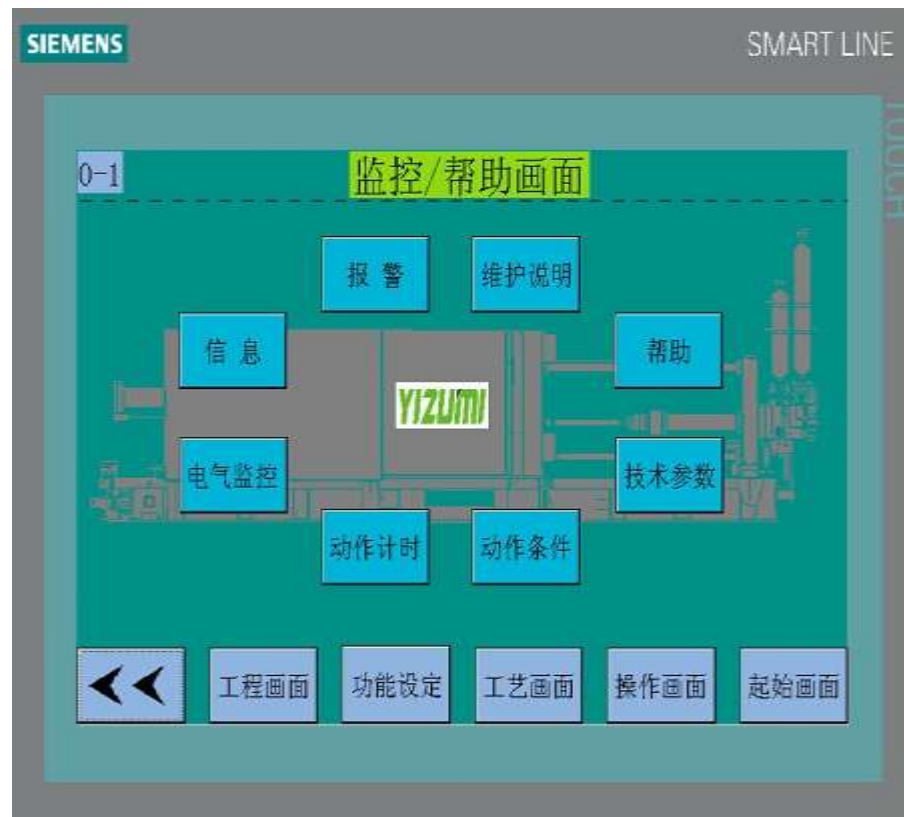
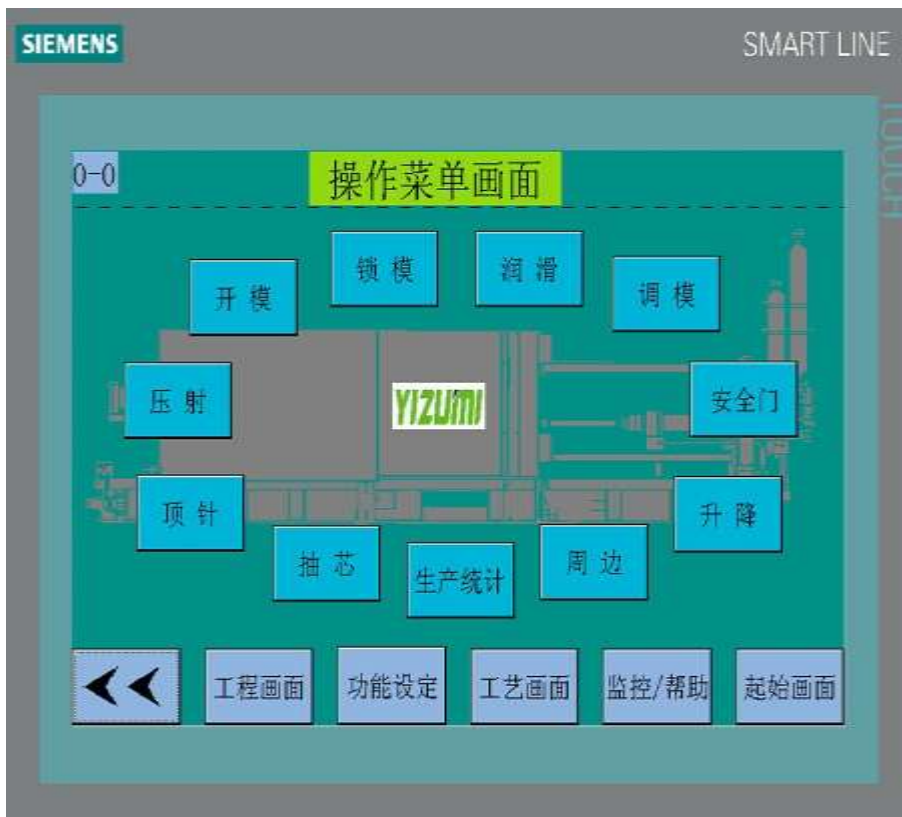
Standard Machine



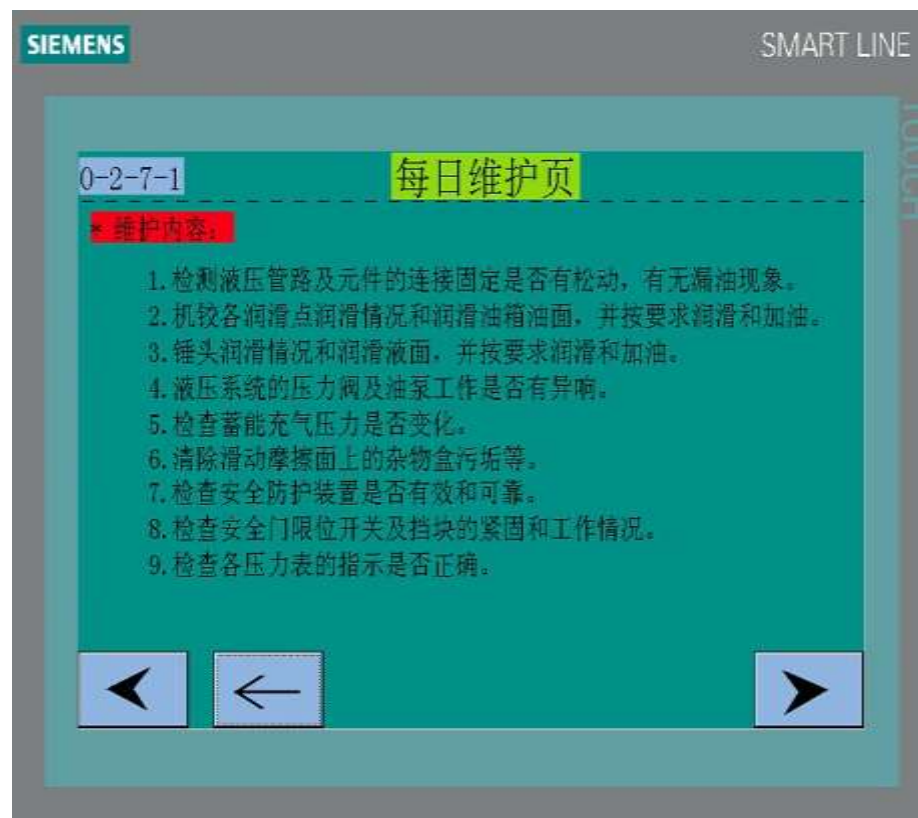
H Series Machine



New simple page layout makes operation and control of machine easier.



Added **operating hints** and **maintenance instructions**



Added **operating hints** and **maintenance instructions**

SIEMENS SMART LINE

0-2-7-1 **每日维护页**

* 维护内容:

1. 检测液压管路及元件的连接固定是否有松动, 有无漏油现象。
2. 机铰各润滑点润滑情况和润滑油箱油面, 并按要求润滑和加油。
3. 锤头润滑情况和润滑液面, 并按要求润滑和加油。
4. 液压系统的压力阀及油泵工作是否有异响。
5. 检查蓄能充气压力是否变化。
6. 清除滑动摩擦面上的杂物盒污垢等。
7. 检查安全防护装置是否有效和可靠。
8. 检查安全门限位开关及挡块的紧固和工作情况。
9. 检查各压力表的指示是否正确。

Navigation: Left, Home, Right

SIEMENS SMART LINE

0-1-5-1 **手动锁模条件页**

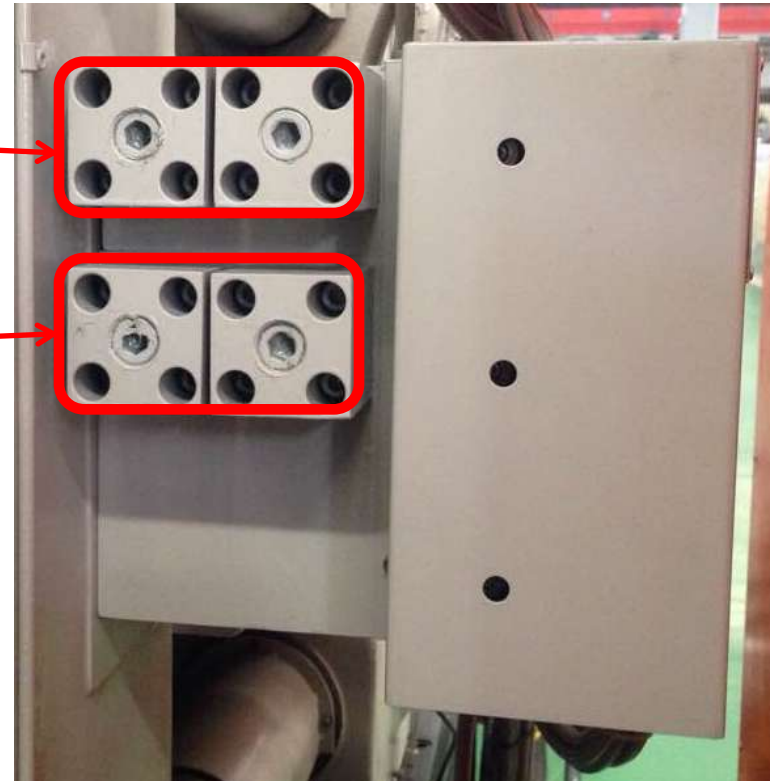
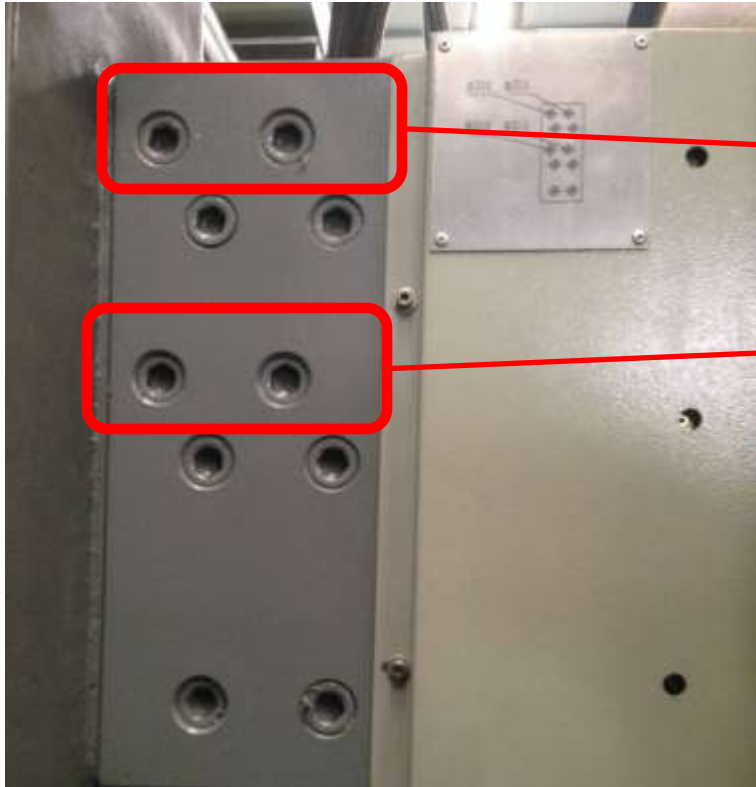
* 动作条件:

1. 前、后安全门关门到位—ON。
2. 电机启动确认—ON。
3. 顶针回限—ON。
4. 调模开关—OFF。
5. 锤头回限—ON。
6. 无报警。
7. 允许合模信号—ON。
8. 模芯状态 (选择抽芯时)
 - A. “锁模前”抽芯, 必须在入限位置。
 - B. “锁模后”抽芯, 必须在出限位置。

Navigation: Left, Home, Return Help, Right

Standard Machine

H Series Machine



Big core space, users can change core more conveniently.

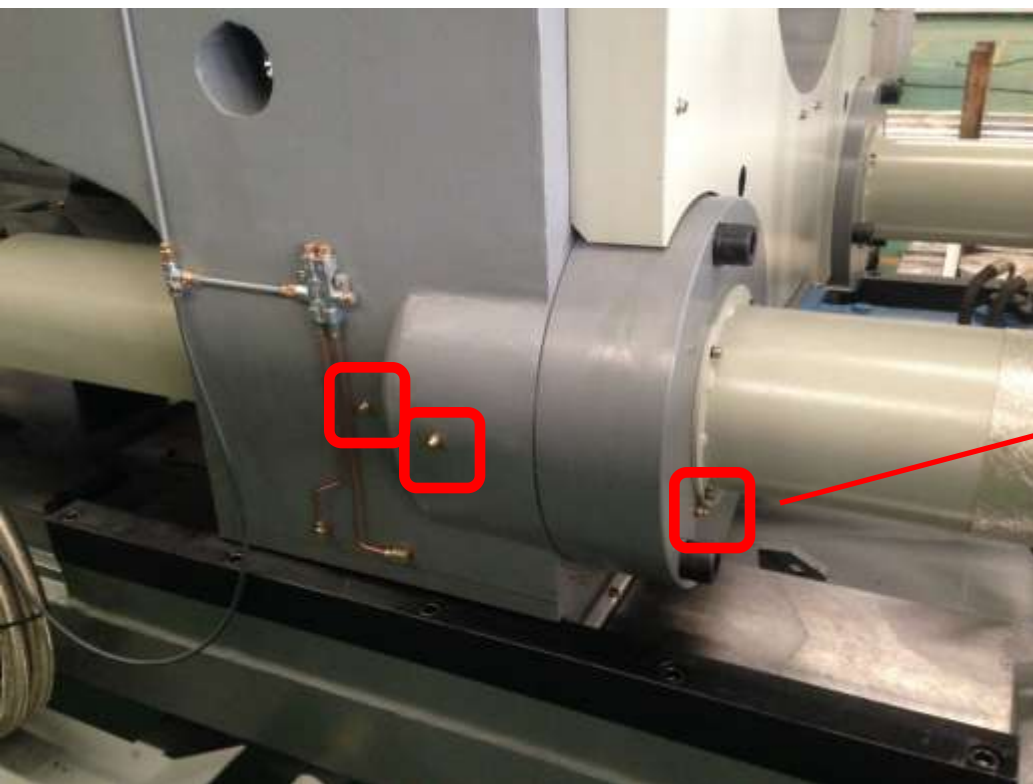
Standard Machine

H Series Machine

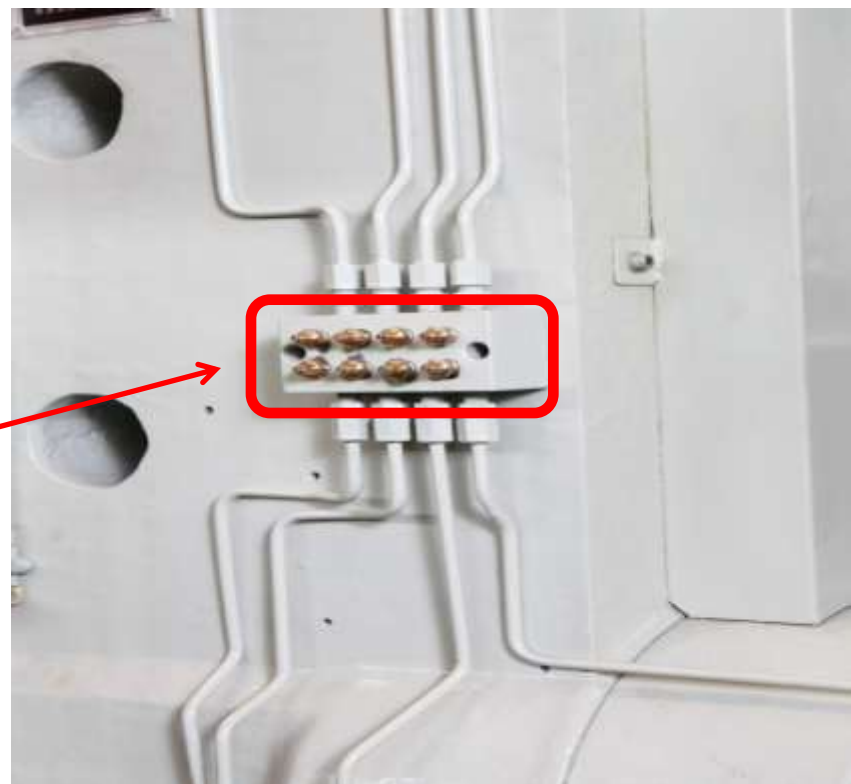


Core circuit using **new interface** that effectively prevents pollution caused by oil mist and improves reliability.

Standard Machine

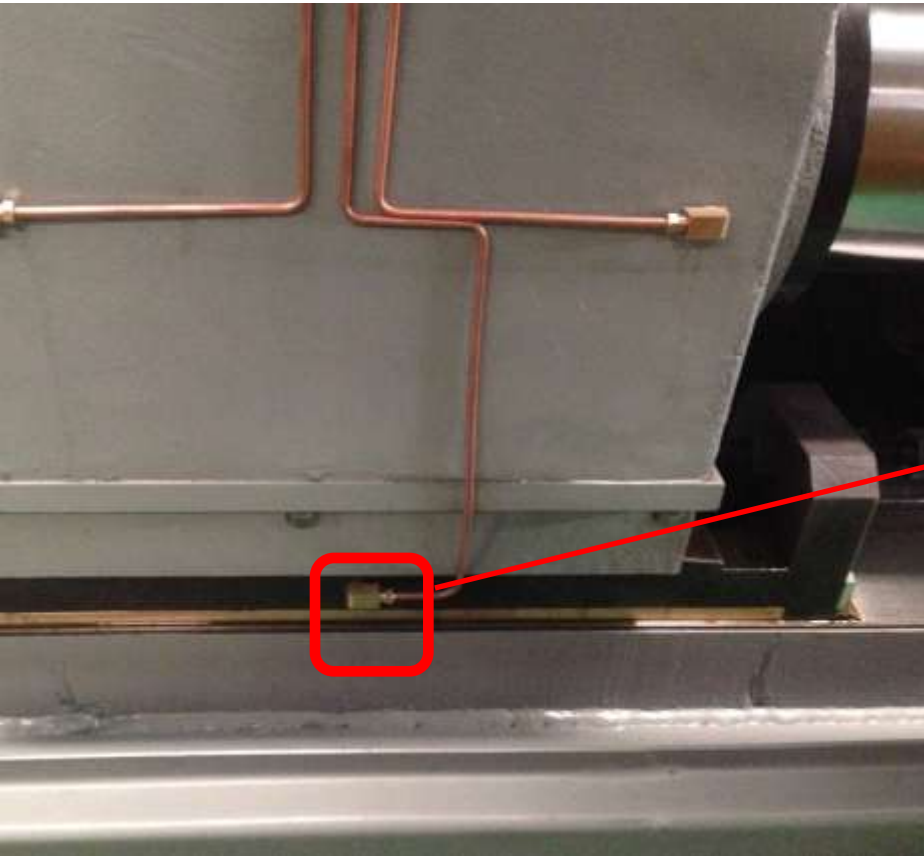


H Series Machine

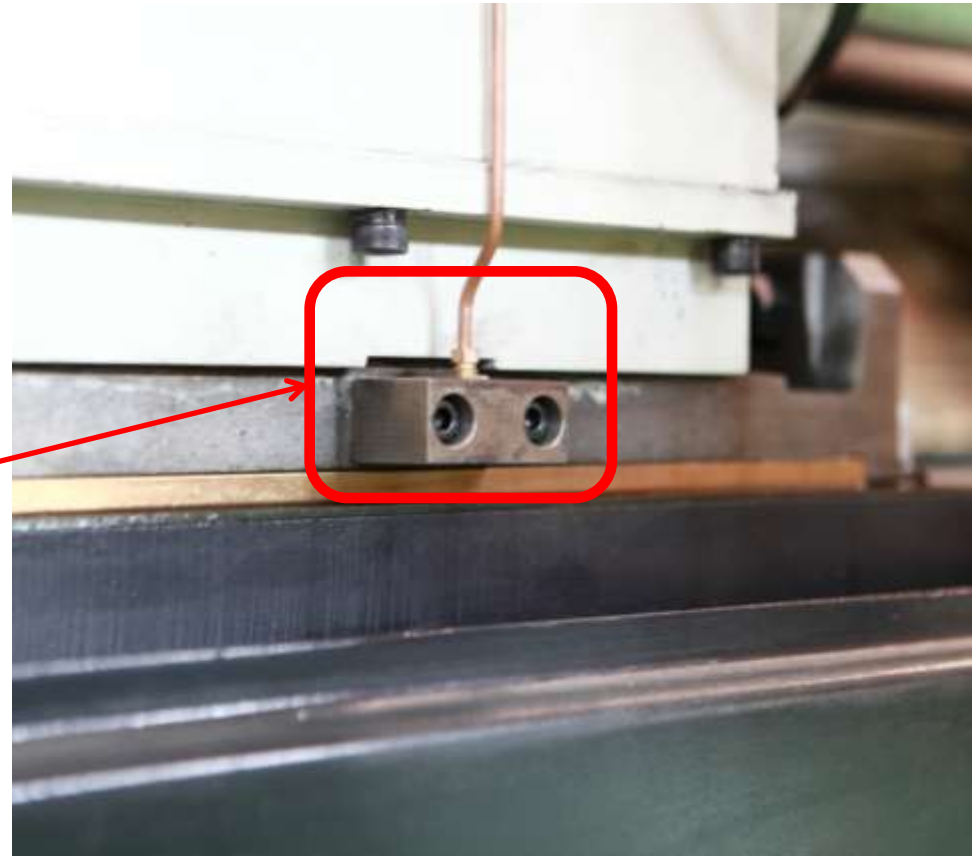


Centralized grease filling ports that further facilitates oil filling

Standard Machine



H Series Machine



Anti-collision protection for the lubrication connection on the movable platen slider

Standard Machine



H Series Machine



The pressure gauges of the injection unit are located in one place, which is convenient for observation.

2. SAFETY



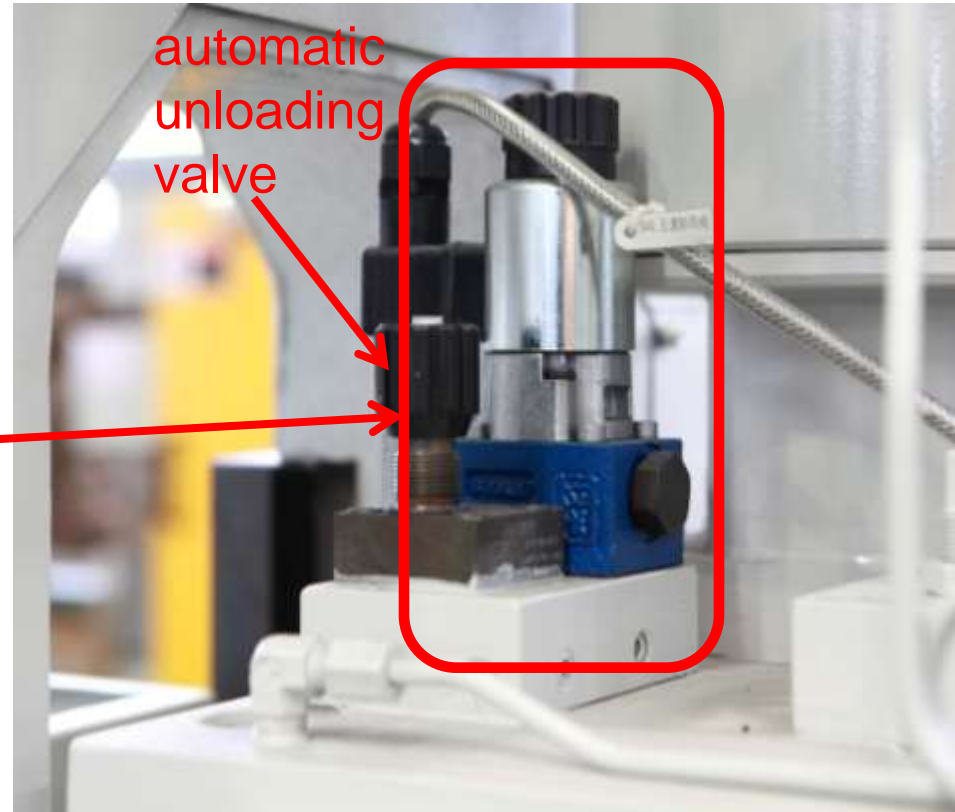
Newly-added **toggle protective gate** to ensure safety in production



Injection unit with protective covers to ensure safety in production

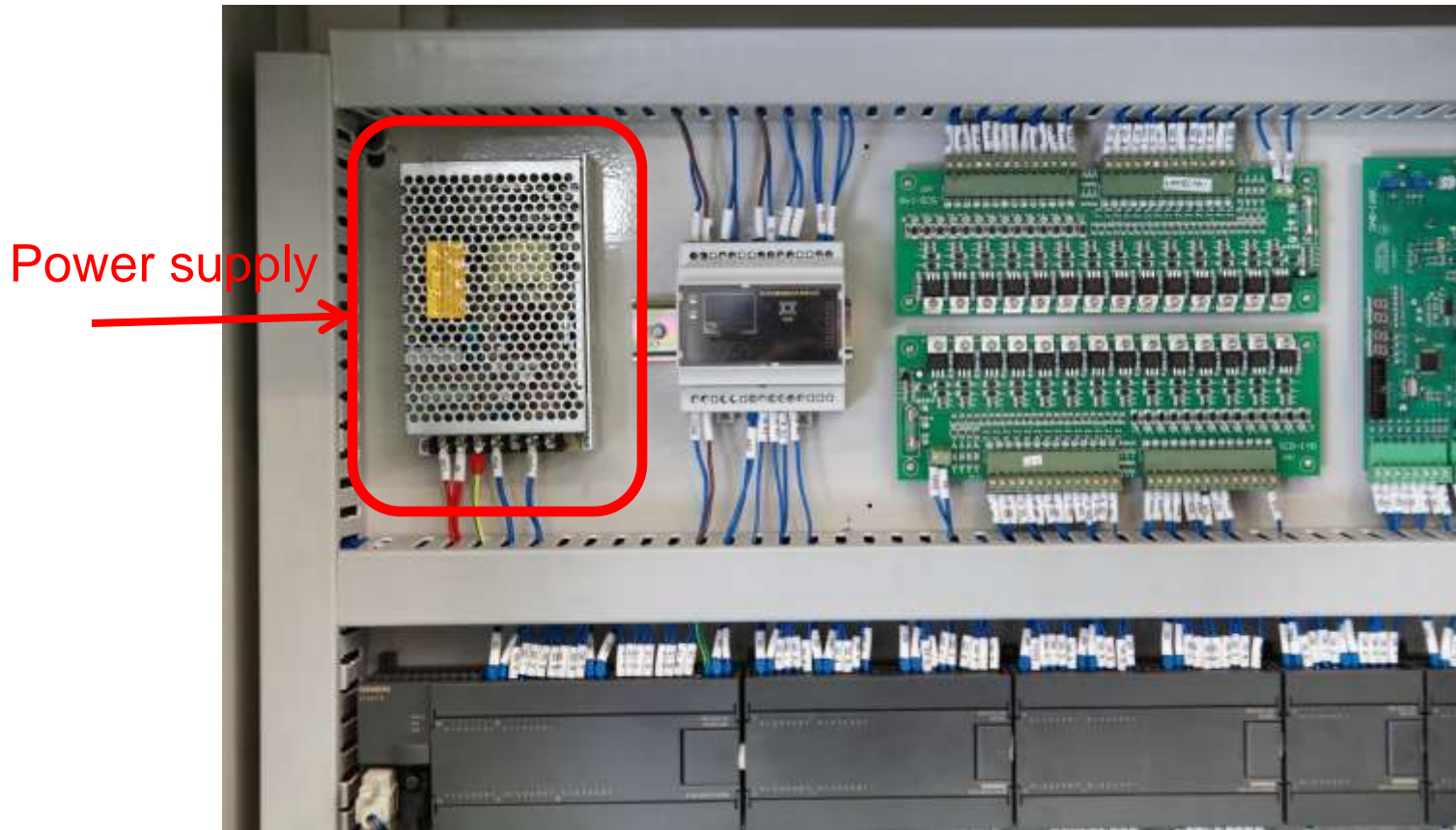
Standard Machine

H Series Machine

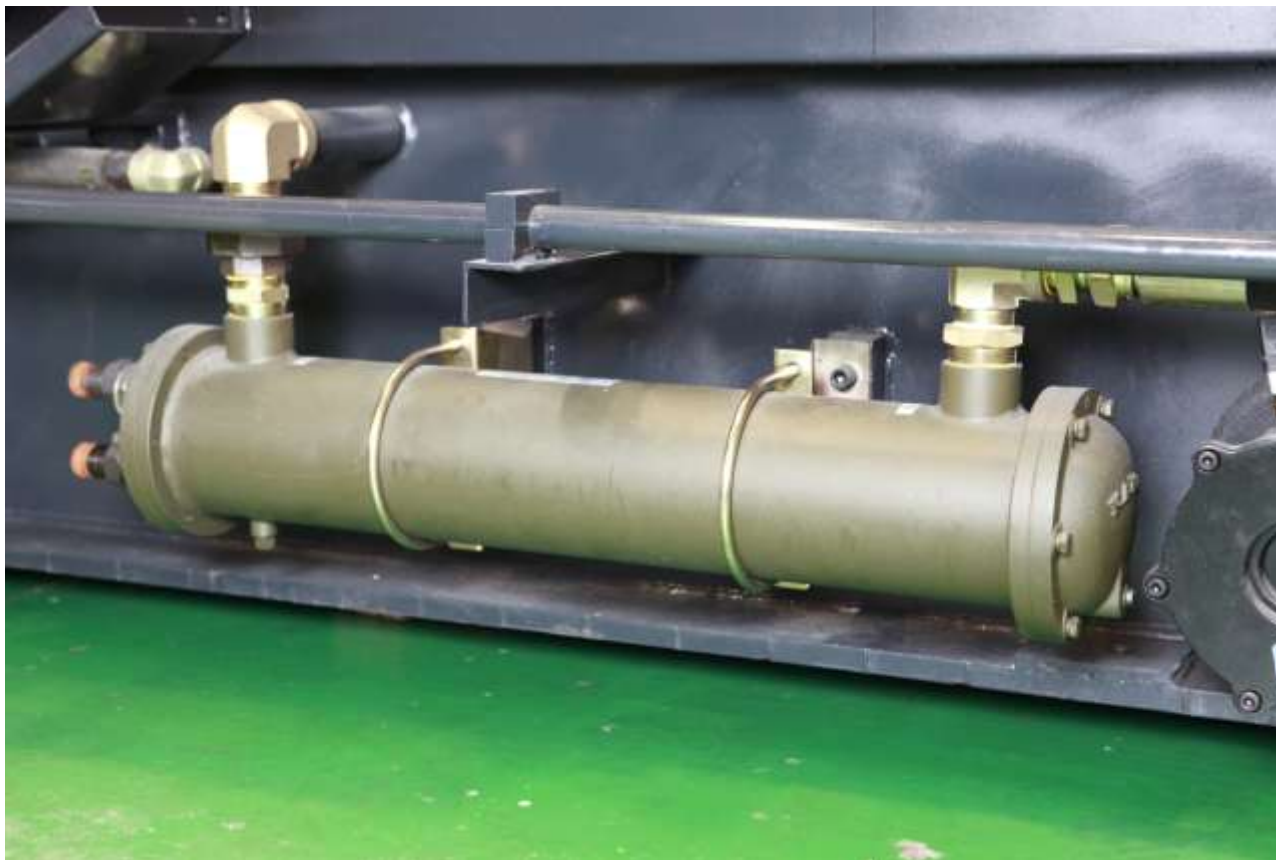


The **automatic unloading valve** of accumulator relieves hydraulic pressure when the motor stops to ensure safety for maintenance.

3. STABILITY



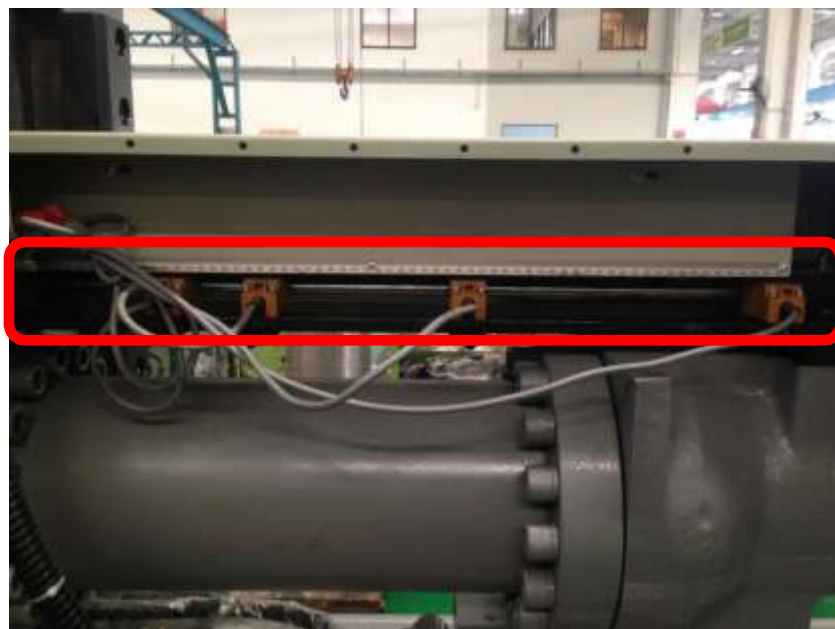
The linear transducer and amplifier are equipped with **independent power supply** to improve the operating stability and reliability of the circuit.



Upgraded cooler effectively lowers the temperature of hydraulic oil.

Standard Machine

H Series Machine



Magnetic scale is used to improve the control accuracy of injection stroke.



The phases of slow injection, fast injection and intensification are under electric control of the injection system; the shot speed is also subject to monitoring and adjustment so that die casting is more stable and semi closed loop control is realized.

Semi closed loop control significantly enhances the degree of automation.

4. EFFICIENCY



With the **upgraded hydraulic system**, dry cycle time is shortened by over 15% and production efficiency is up by approx.15 %.

THE END